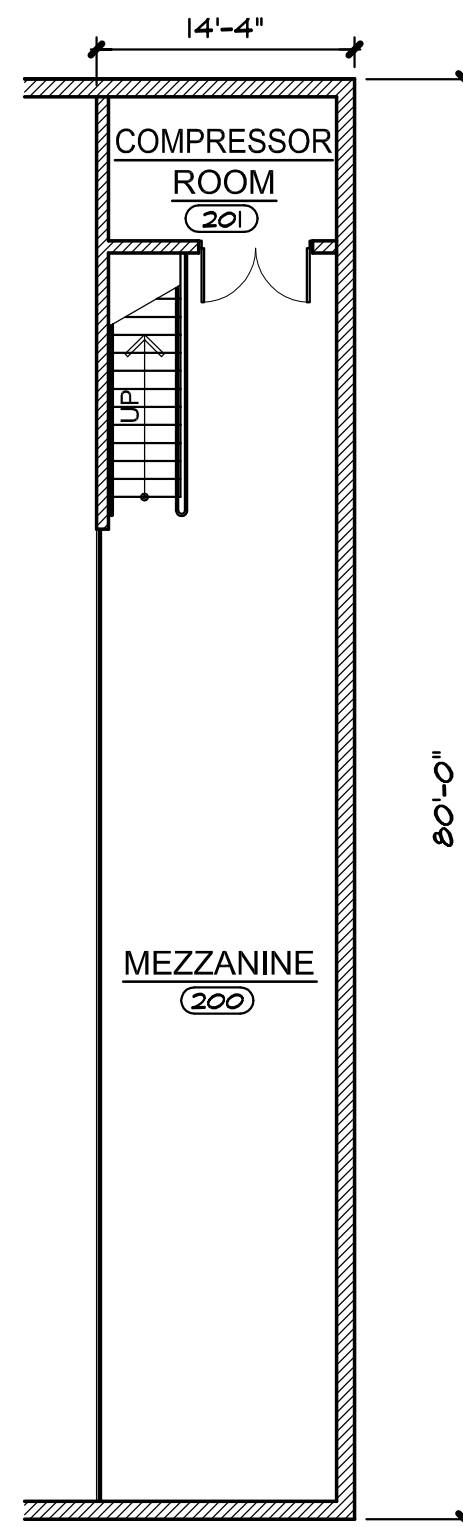


THIS MATERIAL IS THE EXCLUSIVE
 PROPERTY OF CHMP INC. AND CANNOT
 BE REPRODUCED, COPIED, OR USED IN
 ANY MANNER WITHOUT THE PRIOR
 WRITTEN CONSENT OF CHMP INC.
 © 2018

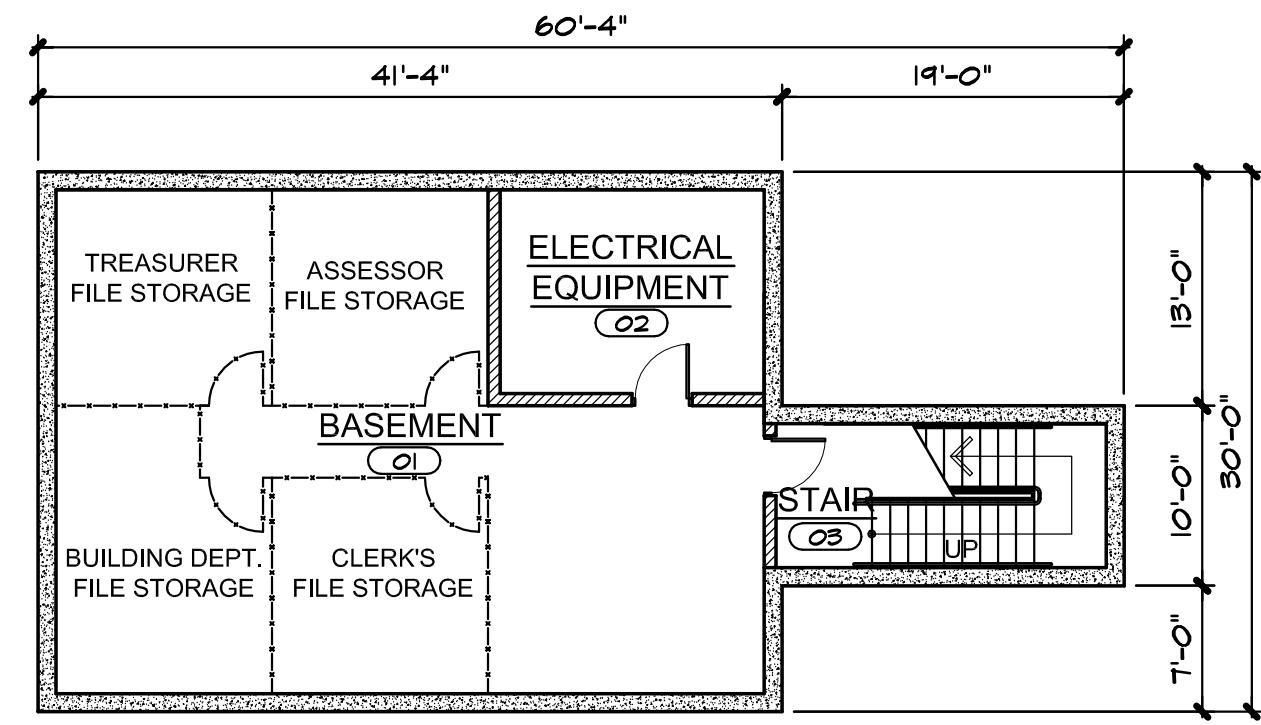
NEW CONSTRUCTION FOR:
**CHARTER TOWNSHIP OF FORT GRATIOT
 MUNICIPAL CENTER**
 3720 KEEWAHDIN ROAD, FORT GRATIOT, MICHIGAN 48059

PROJECT NO. 15003900
 DATE DECEMBER XX, 2015
 AS BUILT DATE
 DRAWN BY JMH
 CHECKED BY GM
 SCALE AS NOTED
 ISSUED FOR:

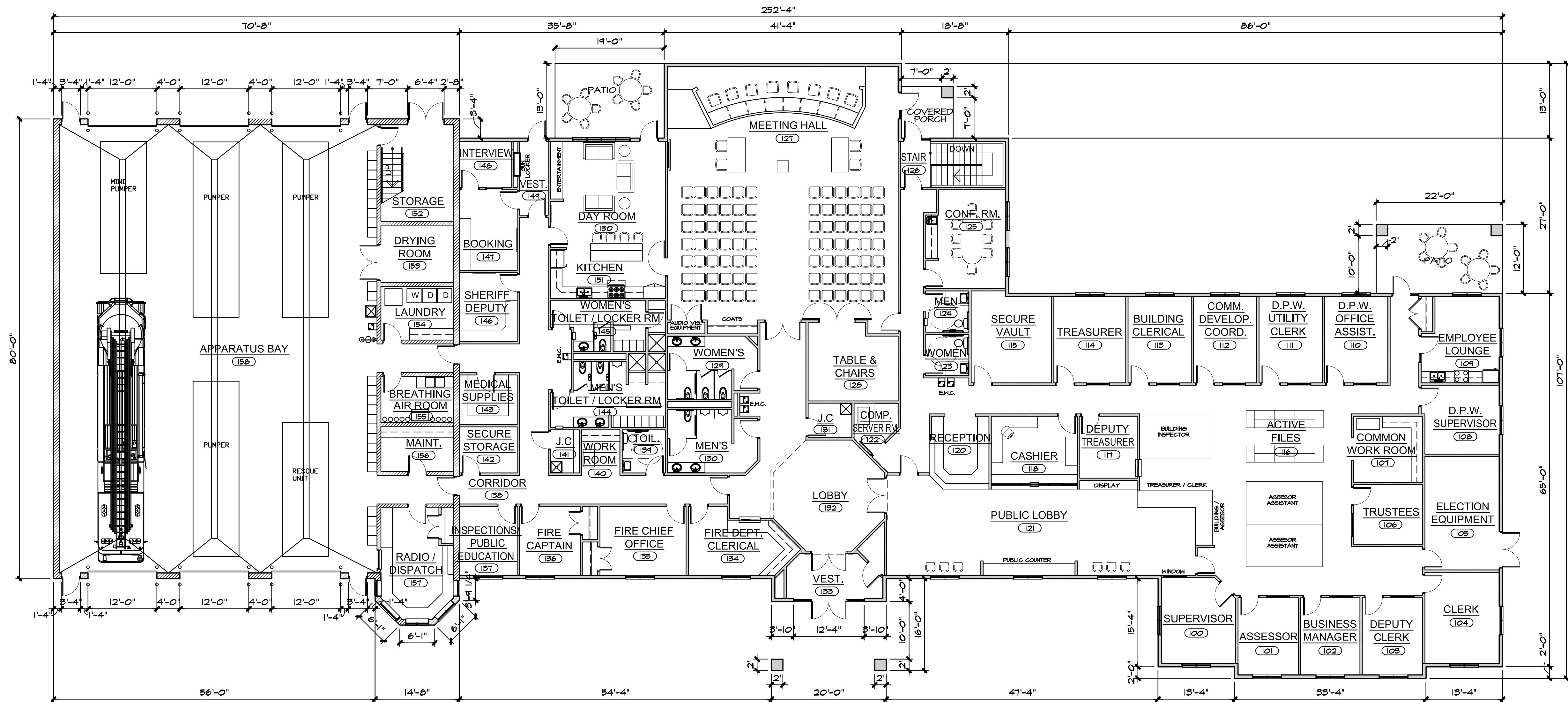
SHEET NO.
A-2
 OF X



**MEZZANINE
 FLOOR PLAN**
 SCALE 3/32" = 1'-0"



**BASEMENT
 FLOOR PLAN**
 SCALE 3/32" = 1'-0"



FLOOR PLAN
 SCALE 3/32" = 1'-0"